



**Water Monitoring Result at M5B - Central Cooling Water Intake Group  
Mid-Flood Tide**

Date	Time	Weather Condition	Sampling Depth		Water Temperature			pH			Salinity			DO Saturation		DO		Turbidity		Suspended Solids				
					°C			-			ppt			%		mg/L		NTU		mg/L				
			m	Value	Average	Value	Average	Value	Average	Value	Average	Value	Average	Value	Average	Value	Average	Value	Average	Value	Average	Value	Average	
2/3/15	16:50	Cloudy	Middle	3.0	18.20	18.20	18.20	8.30	8.30	8.30	32.45	32.45	32.45	84.6	84.4	84.4	6.57	6.56	6.55	5.05	5.03	5.04	7	7.50
	16:52		Middle	3.0	18.20	18.20		8.30	8.30		32.45	32.45		84.3	84.1		6.55	6.53		5.04	5.05		8	
5/3/15	16:23	Cloudy	Middle	3.0	17.80	17.80	17.80	8.31	8.31	8.31	32.39	32.39	32.46	84.2	84.3	84.3	6.58	6.59	6.59	6.02	6.08	6.08	10	9.00
	16:25		Middle	3.0	17.80	17.80		8.31	8.31		32.53	32.53		84.2	84.3		6.58	6.59		6.10	6.11		8	
7/3/15	20:28	Cloudy	Middle	3.5	18.30	18.30	18.30	7.67	7.67	7.68	32.87	32.87	32.88	84.5	84.9	83.7	6.54	6.56	6.48	7.96	7.92	7.83	7	6.50
	20:29		Middle	3.5	18.30	18.30		7.69	7.69		32.88	32.88		83.2	82.2		6.43	6.38		7.75	7.67		6	
9/3/15	8:42	Fine	Middle	3.5	18.90	18.90	18.85	8.23	8.23	8.23	32.39	32.39	32.39	84.8	85.8	85.4	6.51	6.59	6.55	6.43	6.43	6.42	5	5.50
	8:44		Middle	3.5	18.80	18.80		8.23	8.23		32.39	32.39		85.8	85.1		6.59	6.52		6.42	6.39		6	
11/3/15	8:58	Fine	Middle	3.5	17.70	17.70	17.70	8.25	8.25	8.25	32.61	32.61	32.61	88.5	89.9	89.8	6.93	7.04	7.03	6.69	6.69	6.69	5	6.00
	9:00		Middle	3.5	17.70	17.70		8.25	8.25		32.61	32.61		90.4	90.2		7.08	7.06		6.69	6.68		7	
13/3/15	12:20	Cloudy	Middle	3.0	18.10	18.10	18.10	8.20	8.20	8.21	32.41	32.41	32.42	84.7	84.6	84.4	6.59	5.58	6.32	7.25	7.22	7.22	6	7.00
	12:22		Middle	3.0	18.10	18.10		8.21	8.21		32.42	32.42		84.2	84.1		6.55	6.54		7.21	7.21		8	
16/3/15	11:45	Cloudy	Middle	3.5	20.20	20.20	20.30	8.10	8.10	8.10	32.41	32.41	32.40	84.3	85.4	85.4	6.30	6.38	6.37	6.68	6.69	6.69	5	5.00
	11:47		Middle	3.5	20.40	20.40		8.10	8.10		32.38	32.38		85.8	85.9		6.40	6.41		6.69	6.69		5	
18/3/15	15:30	Cloudy	Middle	3.0	20.70	20.70	20.80	8.03	8.03	8.02	32.24	32.24	32.23	90.1	90.2	91.1	6.67	6.67	6.73	7.24	7.22	7.24	4	4.00
	15:32		Middle	3.0	20.90	20.90		8.00	8.00		32.22	32.22		92.0	92.1		6.79	6.80		7.26	7.23		4	
20/3/15	16:25	Fine	Middle	3.0	21.70	21.70	21.90	8.11	8.11	8.12	31.80	31.80	31.71	77.0	76.3	75.7	5.62	5.57	5.52	9.92	9.86	9.75	9	9.50
	16:27		Middle	3.0	22.10	22.10		8.12	8.12		31.62	31.62		74.0	75.6		5.38	5.51		9.63	9.60		10	
23/3/15	8:57	Fine	Middle	3.5	19.40	19.40	19.45	8.15	8.15	8.15	32.12	32.12	32.13	72.1	73.7	73.2	5.49	5.60	5.57	8.90	8.94	8.94	10	9.00
	8:59		Middle	3.5	19.50	19.50		8.15	8.15		32.13	32.13		73.0	73.9		5.55	5.62		8.96	8.97		8	
25/3/15	10:08	Fine	Middle	3.5	19.30	19.30	19.30	8.22	8.22	8.22	32.66	32.66	32.66	74.0	74.1	74.2	5.62	5.62	5.63	3.64	3.57	3.61	4	4.50
	10:10		Middle	3.5	19.30	19.30		8.22	8.22		32.66	32.66		74.3	74.5		5.64	5.65		3.51	3.73		5	
27/3/15	10:55	Cloudy	Middle	3.5	19.90	19.90	19.95	8.19	8.19	8.19	32.44	32.44	32.44	69.8	69.2	69.4	5.25	5.20	5.22	2.76	2.75	2.77	6	5.00
	10:57		Middle	3.5	20.00	20.00		8.19	8.19		32.43	32.43		69.0	69.4		5.19	5.22		2.76	2.80		4	
30/3/15	14:38	Fine	Middle	3.5	21.70	21.70	21.70	8.11	8.11	8.11	32.61	32.61	32.55	71.5	71.8	71.1	5.18	5.20	5.15	2.81	2.78	2.90	4	4.50
	14:40		Middle	3.5	21.70	21.70		8.11	8.11		32.49	32.49		70.7	70.4		5.12	5.10		2.99	3.00		5	

Remarks:  
 Single underline denotes exceedance over Action Level.  
 Double underline denotes exceedance over Limit Level.



**Water Monitoring Result at M5B - Central Colling Water Intake Group  
Mid-Ebb Tide**

Date	Time	Weather Condition	Sampling Depth		Water Temperature			pH			Salinity			DO Saturation			DO			Turbidity			Suspended Solids	
					°C		-		ppt		%		mg/L		NTU		mg/L							
					Value	Average	Value	Average	Value	Average	Value	Average	Value	Average	Value	Average	Value	Average	Value	Average	Value	Average		
2/3/15	23:03	cloudy	Middle	3.0	18.70	18.70	18.70	7.97	7.97	7.97	27.00	27.00	27.00	86.4	86.5	86.6	6.74	6.74	6.75	6.76	6.74	6.63	7	6.50
	23:04		Middle	3.0	18.70	18.70		7.97	7.97		27.00	26.99		86.9	86.7		6.77	6.76		6.50	6.53		6	
5/3/15	10:45	Cloudy	Middle	3.0	17.70	17.70	17.70	8.33	8.33	8.33	32.65	32.65	32.65	89.4	89.6	89.4	7.00	7.02	7.00	6.43	6.42	6.42	8	8.00
	10:47		Middle	3.0	17.70	17.70		8.33	8.33		32.65	32.65		89.3	89.4		6.99	7.00		6.42	6.42		8	
7/3/15	11:27	Cloudy	Middle	3.5	18.20	18.20	18.20	8.28	8.28	8.28	32.67	32.67	32.65	85.3	85.5	85.7	6.62	6.63	6.65	8.56	8.55	8.50	12	12.00
	11:29		Middle	3.5	18.20	18.20		8.28	8.28		32.63	32.63		85.9	86.1		6.66	6.68		8.45	8.44		12	
9/3/15	14:15	Fine	Middle	3.0	21.10	21.10	21.30	8.15	8.15	8.15	32.31	32.31	32.30	86.4	86.4	86.1	6.35	6.35	6.32	5.29	5.14	5.18	6	6.50
	14:17		Middle	3.0	21.50	21.50		8.15	8.15		32.28	32.28		85.8	85.7		6.29	6.29		5.15	5.12		7	
11/3/15	14:35	Cloudy	Middle	3.0	18.00	18.00	18.00	8.28	8.28	8.29	32.79	32.79	32.79	87.0	86.0	85.5	6.76	6.68	6.65	5.62	5.63	5.67	6	5.50
	14:37		Middle	3.0	18.00	18.00		8.29	8.29		32.78	32.78		85.0	84.0		6.61	6.53		5.69	5.72		5	
13/3/15	15:07	Cloudy	Middle	3.5	18.00	18.00	18.00	8.24	8.24	8.25	32.60	32.60	32.60	86.9	86.9	87.4	6.69	6.69	6.77	5.75	5.89	5.86	6	5.50
	15:09		Middle	3.5	18.00	18.00		8.25	8.25		32.59	32.59		87.7	88.0		6.83	6.87		5.89	5.90		5	
16/3/15	19:35	Cloudy	Middle	3.5	20.10	20.10	20.10	7.78	7.78	7.80	32.21	32.21	32.52	82.5	81.8	82.2	6.17	6.11	6.14	5.25	5.12	5.11	5	4.50
	19:36		Middle	3.5	20.10	20.10		7.82	7.82		32.83	32.83		82.2	82.1		6.14	6.14		5.05	5.02		4	
18/3/15	11:20	Cloudy	Middle	3.5	20.90	20.90	20.90	8.07	8.07	8.07	32.24	32.24	32.24	80.1	80.7	80.4	5.92	5.96	5.94	6.17	6.27	6.25	7	7.00
	11:22		Middle	3.5	20.90	20.90		8.07	8.07		32.23	32.23		80.5	80.3		5.94	5.92		6.28	6.28		7	
20/3/15	10:47	Fine	Middle	3.5	20.70	20.70	20.80	8.11	8.11	8.11	32.20	32.20	32.20	87.7	89.5	88.5	6.49	6.61	6.57	6.70	6.61	6.64	6	6.00
	10:50		Middle	3.5	20.90	20.90		8.11	8.11		32.20	32.20		88.4	88.4		6.63	6.54		6.62	6.63		6	
23/3/15	14:20	Cloudy	Middle	3.5	21.00	21.00	21.15	8.16	8.16	8.16	32.44	32.44	32.43	73.4	74.0	73.9	5.40	5.43	5.43	5.42	5.35	5.40	5	5.00
	14:22		Middle	3.5	21.30	21.30		8.16	8.16		32.42	32.42		73.9	74.4		5.42	5.46		5.41	5.42		5	
25/3/15	15:25	Cloudy	Middle	3.5	19.70	19.70	19.70	8.25	8.25	8.25	32.64	32.64	32.64	75.1	76.4	75.5	5.66	5.76	5.67	3.16	3.16	3.15	4	4.00
	15:27		Middle	3.5	19.70	19.70		8.25	8.25		32.64	32.64		75.6	74.9		5.70	5.55		3.15	3.14		4	
27/3/15	16:30	Fine	Middle	3.5	20.70	20.70	20.80	8.19	8.19	8.19	32.66	32.66	32.64	69.3	68.5	68.4	5.13	5.05	5.05	4.29	4.27	4.28	7	7.00
	16:32		Middle	3.5	20.90	20.90		8.19	8.19		32.62	32.62		68.4	67.4		5.05	4.97		4.29	4.28		7	
30/3/15	19:51	Cloudy	Middle	3.5	22.10	22.10	22.10	7.75	7.75	7.75	32.33	32.34	32.56	77.7	78.7	78.5	5.60	5.67	5.66	4.55	4.53	4.46	2	2.50
	19:52		Middle	3.5	22.10	22.10		7.75	7.75		32.79	32.79		79.3	78.4		5.72	5.65		4.40	4.37		3	

Remarks:  
Single underline denotes exceedance over Action Level.  
Double underline denotes exceedance over Limit Level.



**Water Monitoring Result at Culvert J - Reference Station  
Mid-Flood Tide**

Date	Time	Weather Condition	Sampling Depth		Water Temperature			pH			Salinity		DO Saturation		DO		Turbidity		Suspended Solids					
					°C			-			ppt		%		mg/L		NTU		mg/L					
			m	Value	Average	Value	Average	Value	Average	Value	Average	Value	Average	Value	Average	Value	Average	Value	Average	Value	Average			
2/3/15	16:54	Cloudy	Middle	3.0	18.10	18.10	18.10	8.24	8.24	8.23	29.96	29.96	29.96	75.5	74.0	73.8	5.96	5.85	5.83	10.76	10.76	10.76	6	6.50
	16:57		Middle	3.0	18.10	18.10		8.21	8.21		29.96	29.96		73.0	72.8		5.77	5.75		10.76	10.76		7	
5/3/15	16:20	Cloudy	Middle	3.0	17.80	17.80	17.80	8.31	8.31	8.31	32.52	32.52	32.52	84.1	83.7	83.4	6.58	6.54	6.52	6.47	6.45	6.43	3	4.00
	16:22		Middle	3.0	17.80	17.80		8.31	8.31		32.51	32.51		83.2	82.4		6.51	6.45		6.43	6.36		5	
7/3/15	20:32	Cloudy	Middle	3.0	18.60	18.60	18.60	7.83	7.83	7.83	27.52	27.52	27.29	58.8	58.9	58.4	4.67	4.67	4.65	15.80	14.57	14.90	7	7.00
	20:33		Middle	3.0	18.60	18.60		7.83	7.83		27.05	27.05		58.6	57.3		4.65	4.61		14.40	14.81		7	
9/3/15	8:35	Fine	Middle	3.0	18.90	18.90	18.90	8.22	8.22	8.22	32.29	32.29	32.29	79.0	79.9	79.9	6.06	6.13	6.13	7.18	7.08	7.07	6	6.00
	8:37		Middle	3.0	18.90	18.90		8.22	8.22		32.29	32.29		80.2	80.4		6.15	6.16		7.01	7.00		6	
11/3/15	8:50	Fine	Middle	3.0	17.60	17.60	17.60	8.24	8.24	8.24	32.56	32.56	32.56	81.3	81.4	80.9	6.38	6.38	6.35	6.30	6.34	6.37	7	7.50
	8:52		Middle	3.0	17.60	17.60		8.24	8.24		32.56	32.56		80.9	80.1		6.34	6.29		6.41	6.43		8	
13/3/15	12:10	Cloudy	Middle	3.0	18.40	18.40	18.40	8.08	8.08	8.08	29.65	29.65	29.60	70.8	70.1	70.4	5.57	5.52	5.54	9.97	9.96	9.96	6	7.00
	12:12		Middle	3.0	18.40	18.40		8.08	8.08		29.54	29.54		70.6	70.2		5.56	5.52		9.96	9.95		8	
16/3/15	11:30	Cloudy	Middle	3.0	19.80	19.80	19.85	8.10	8.10	8.10	32.28	32.28	32.27	80.9	81.1	81.0	6.10	6.12	6.10	4.55	4.53	4.47	3	3.50
	11:32		Middle	3.0	19.90	19.90		8.10	8.10		32.26	32.26		81.0	80.8		6.10	6.09		4.40	4.40		4	
18/3/15	15:25	Cloudy	Middle	2.5	20.70	20.70	20.80	8.06	8.06	8.06	31.75	31.75	31.75	79.6	79.5	79.4	6.92	6.91	6.90	8.04	8.00	8.02	4	4.00
	15:27		Middle	2.5	20.90	20.90		8.06	8.06		31.74	31.74		79.3	79.1		6.89	6.87		8.00	8.03		4	
20/3/15	16:28	Fine	Middle	3.0	22.10	22.10	22.10	8.12	8.12	8.12	31.43	31.43	31.45	66.0	66.7	66.7	4.85	4.89	4.89	7.01	6.93	7.03	9	8.00
	16:30		Middle	3.0	22.10	22.10		8.11	8.11		31.46	31.46		66.8	67.4		4.90	4.93		6.98	7.20		7	
23/3/15	8:50	Fine	Middle	3.5	19.50	19.50	19.50	8.07	8.07	8.07	30.34	30.34	30.35	68.8	68.4	68.5	5.25	5.24	5.24	8.14	8.08	8.09	7	8.00
	8:52		Middle	3.5	19.50	19.50		8.07	8.07		30.36	30.36		68.9	67.7		5.27	5.19		8.07	8.05		9	
25/3/15	10:00	Fine	Middle	3.0	19.40	19.40	19.40	8.15	8.15	8.15	31.75	31.75	31.76	66.4	66.4	66.5	5.06	5.06	5.07	4.58	4.29	4.47	5	4.50
	10:02		Middle	3.0	19.40	19.40		8.15	8.15		31.76	31.76		66.7	66.4		5.09	5.06		4.48	4.53		4	
27/3/15	10:50	Cloudy	Middle	3.0	19.90	19.90	19.95	8.18	8.18	8.18	32.18	32.18	32.18	69.4	70.2	70.3	5.22	5.29	5.29	3.20	3.23	3.23	4	5.00
	10:52		Middle	3.0	20.00	20.00		8.18	8.18		32.17	32.17		71.0	70.6		5.34	5.31		3.24	3.24		6	
30/3/15	14:42	Fine	Middle	3.5	21.80	21.80	21.85	8.07	8.07	8.05	30.01	30.01	30.01	60.5	61.5	61.1	4.46	4.53	4.50	7.21	7.20	7.20	4	4.50
	14:44		Middle	3.5	21.90	21.90		8.02	8.02		30.00	30.00		61.4	61.0		4.52	4.49		7.20	7.20		5	

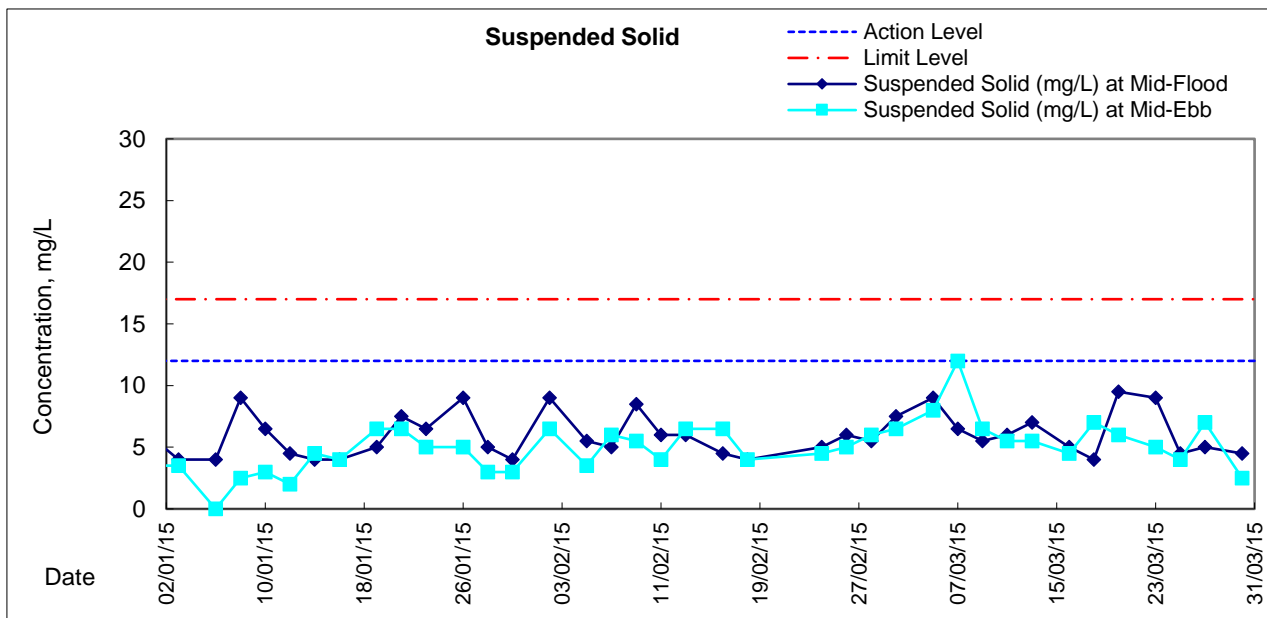
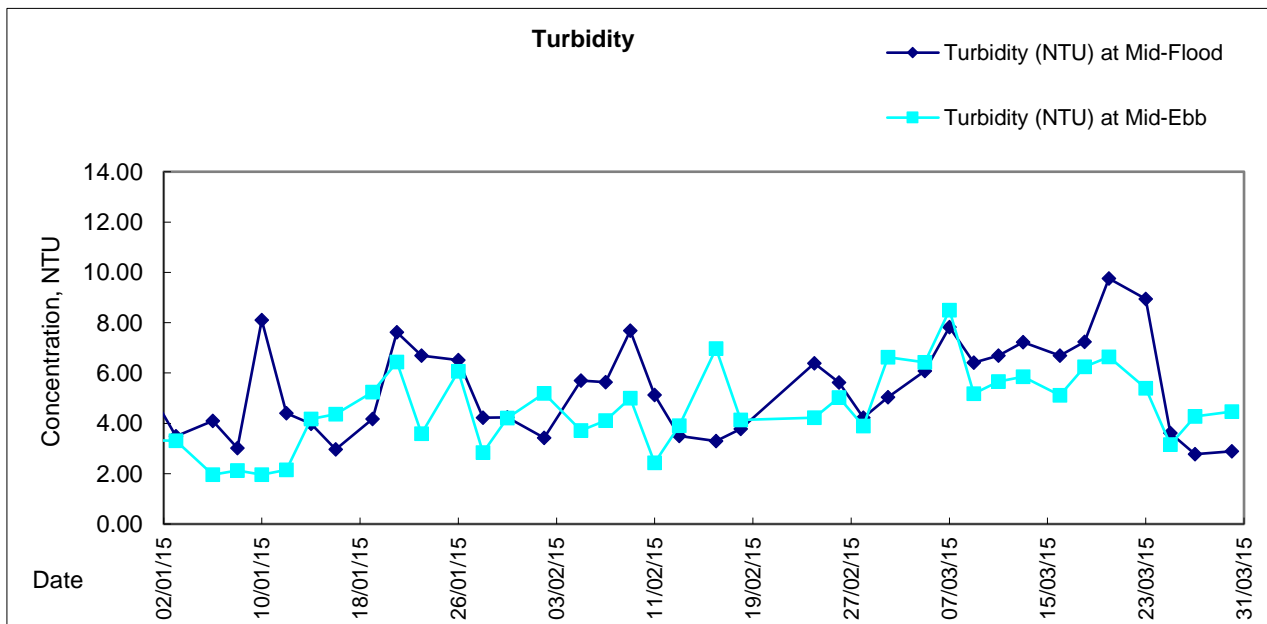
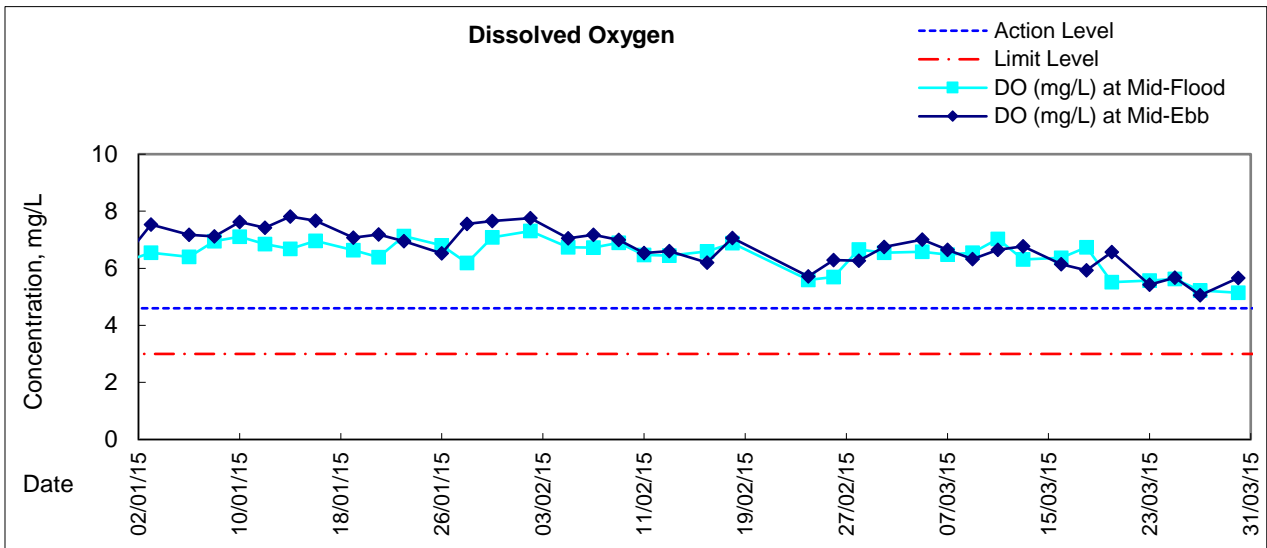


**Water Monitoring Result at Culvert J - Reference Station  
Mid-Ebb Tide**

Date	Time	Weather Condition	Sampling Depth		Water Temperature			pH			Salinity		DO Saturation		DO		Turbidity		Suspended Solids					
					°C		-		ppt		%		mg/L		NTU		mg/L							
					Value	Average	Value	Average	Value	Average	Value	Average	Value	Average	Value	Average	Value	Average	Value	Average				
2/3/15	23:17	cloudy	Middle	3	18.80	18.80	18.85	7.96	7.96	7.95	26.28	26.28	26.29	60.9	60.8	60.5	4.75	4.75	4.72	8.09	7.91	7.88	6	6.50
	23:18		Middle	3	18.90	18.90		7.94	7.94		26.29	26.29		60.2	60.1		4.70	4.69		7.88	7.62		7	
5/3/15	10:40	Cloudy	Middle	3	17.80	17.80	17.80	8.19	8.19	8.19	30.27	30.27	30.28	79.2	79.5	79.1	6.28	6.30	6.27	8.77	8.77	8.77	4	4.00
	10:42		Middle	3	17.80	17.80		8.19	8.19		30.28	30.28		79.1	78.7		6.27	6.24		8.77	8.76		4	
7/3/15	11:20	Cloudy	Middle	3	18.40	18.40	18.40	8.18	8.18	8.18	29.67	29.67	29.67	81.8	81.4	81.2	6.42	6.40	6.38	9.14	9.14	9.13	8	7.00
	11:22		Middle	3	18.40	18.40		8.17	8.17		29.67	29.67		80.8	80.7		6.35	6.34		9.13	9.12		6	
9/3/15	14:10	Fine	Middle	3	20.40	20.40	20.50	8.11	8.11	8.11	31.05	31.05	31.05	78.5	78.8	78.5	5.89	5.91	5.89	7.53	7.53	7.42	5	5.00
	14:12		Middle	3	20.60	20.60		8.11	8.11		31.04	31.04		78.5	78.2		5.89	5.87		7.38	7.22		5	
11/3/15	14:39	Cloudy	Middle	3	18.00	18.00	18.00	8.19	8.19	8.19	30.57	30.57	30.56	72.5	72.0	71.8	5.72	5.68	5.67	8.60	8.85	8.83	6	6.00
	14:41		Middle	3	18.00	18.00		8.18	8.18		30.55	30.55		71.6	71.2		5.65	5.61		8.83	9.04		6	
13/3/15	15:00	Cloudy	Middle	3	18.30	18.30	18.30	8.19	8.19	8.19	30.97	30.97	30.97	76.6	76.4	76.2	5.99	5.98	5.96	8.69	8.69	8.69	4	4.50
	15:02		Middle	3	18.30	18.30		8.19	8.19		30.97	30.97		76.1	75.6		5.96	5.91		8.69	8.68		5	
16/3/15	19:42	Cloudy	Middle	3	20.10	20.10	20.10	7.86	7.86	7.86	26.48	26.49	26.79	53.0	53.2	53.0	4.11	4.14	4.15	13.96	13.93	13.94	8	8.00
	19:43		Middle	3	20.10	20.10		7.86	7.86		27.05	27.15		54.9	51.0		4.26	4.07		13.93	13.92		8	
18/3/15	11:15	Cloudy	Middle	3	20.50	20.50	20.60	8.04	8.04	8.04	31.74	31.74	31.74	78.9	80.0	79.5	5.88	5.96	5.92	8.28	8.28	8.27	7	6.50
	11:17		Middle	3	20.70	20.70		8.04	8.04		31.73	31.73		79.7	79.3		5.94	5.91		8.26	8.24		6	
20/3/15	10:40	Fine	Middle	3	21.00	21.00	21.15	8.10	8.10	8.10	32.12	32.12	32.10	78.6	78.6	78.9	6.79	6.79	6.81	7.27	7.24	7.35	5	5.50
	10:42		Middle	3	21.30	21.30		8.10	8.10		32.07	32.07		79.2	79.2		6.83	6.82		7.51	7.36		6	
23/3/15	14:15	Cloudy	Middle	4	20.70	20.70	20.80	8.14	8.14	8.14	31.40	31.40	31.40	73.9	72.8	73.2	5.49	5.42	5.45	5.06	5.31	5.17	5	4.50
	14:17		Middle	4	20.90	20.90		8.13	8.13		31.39	31.39		72.8	73.4		5.42	5.45		5.13	5.16		4	
25/3/15	15:20	Cloudy	Middle	3	19.60	19.60	19.60	8.24	8.24	8.24	32.60	32.60	32.65	72.3	72.9	73.1	5.46	5.51	5.53	4.28	4.15	4.21	4	4.50
	15:22		Middle	3	19.60	19.60		8.24	8.24		32.69	32.69		73.8	73.5		5.59	5.56		4.17	4.23		5	
27/3/15	16:26	Fine	Middle	4	21.20	21.20	21.20	8.16	8.16	8.16	32.11	32.11	32.06	64.9	63.6	62.2	4.77	4.60	4.55	5.76	5.71	5.66	6	6.00
	16:28		Middle	4	21.20	21.20		8.16	8.16		32.01	32.01		60.3	59.9		4.43	4.40		5.66	5.51		6	
30/3/15	20:00	Cloudy	Middle	3	22.30	22.30	22.30	7.78	7.78	7.78	29.40	29.40	29.52	45.1	45.3	45.5	3.31	3.32	3.34	10.00	9.30	9.49	6	5.50
	20:01		Middle	3	22.30	22.30		7.78	7.76		29.63	29.63		45.5	46.0		3.34	3.37		9.46	9.21		5	



### Graphic Presentation of Water Quality Result of M5B - Central Cooling Water Intake Groups





### Graphic Presentation of Water Quality Result of Culvert J - Reference Station

